



Boeing BBJ  
**787-8 Dreamliner S/N 35309**

**Entry into Service:** 2016

**Total Passengers:** 40 + 7 Cabin Crew Seats

# Boeing BBJ

## 787-8 Dreamliner S/N 35309

### AIRFRAME

Manufacturer	Boeing
Model	787-8
Total Time Since New	987.51 Hours
Total Landings Since New	199

### ENGINES

Manufacturer	General Electric
Model	GENX-1B70/75/P2G01

#### ENGINE N°1

Total Time Since New	987.51 Hours
Total Cycles Since New	199

#### ENGINE N°2

Total Time Since New	987.51 Hours
Total Cycles Since New	199

### APU

Manufacturer	Pratt & Whitney
Model	APS5000A
Total Time Since New	2261 Hours

Specifications are subject to verification upon inspection.

# Boeing BBJ

## 787-8 Dreamliner S/N 35309

### INTERIOR

VIP Suite and Lounge in the forward section of the Aircraft

Entourage premium airline seating in the aft section of the Aircraft

#### FWD CABIN

- Forward Galley
  - Activated G1 galley unit with latest-generation premium-grade 787 inserts (ARINC spec)
- Door 1R Crew Area
- Flight Crew private berth compartment with bunking divan (converts to 2 over/under bunks)
- Forward Hallway (D1L to D2L)
- VIP Stateroom
  - VIP Lavatory, VIP Dressing Room
  - Bedroom
  - King-size bed, 42" LCD monitor

- Main Entry Door

#### MID CABIN

- Lounge
  - Four (4) individual workstations (lie-flat single club seats) with foldout tables
  - Center cocktail table
  - Powered split divan for entertaining
  - (2) Large serving buffets
  - Aft meeting/dining space

### INTERIOR (cont.)

#### AFT CABIN

- Amenities and uniquely-styled "circular" lavatory
- Guest Seating
  - 18 passengers - three rows of 2-2-2 configuration
- Staff Seating (Premium-economy)
  - 6 passengers - one row of 2-2-2 configuration
- Aft Entry/Galley
  - Activated Aft Galley Complex (G4) with latest-generation premium-grade 787 inserts
  - Four (4) Flight Attendant seats

Specifications are subject to verification upon inspection.

# Boeing BBJ

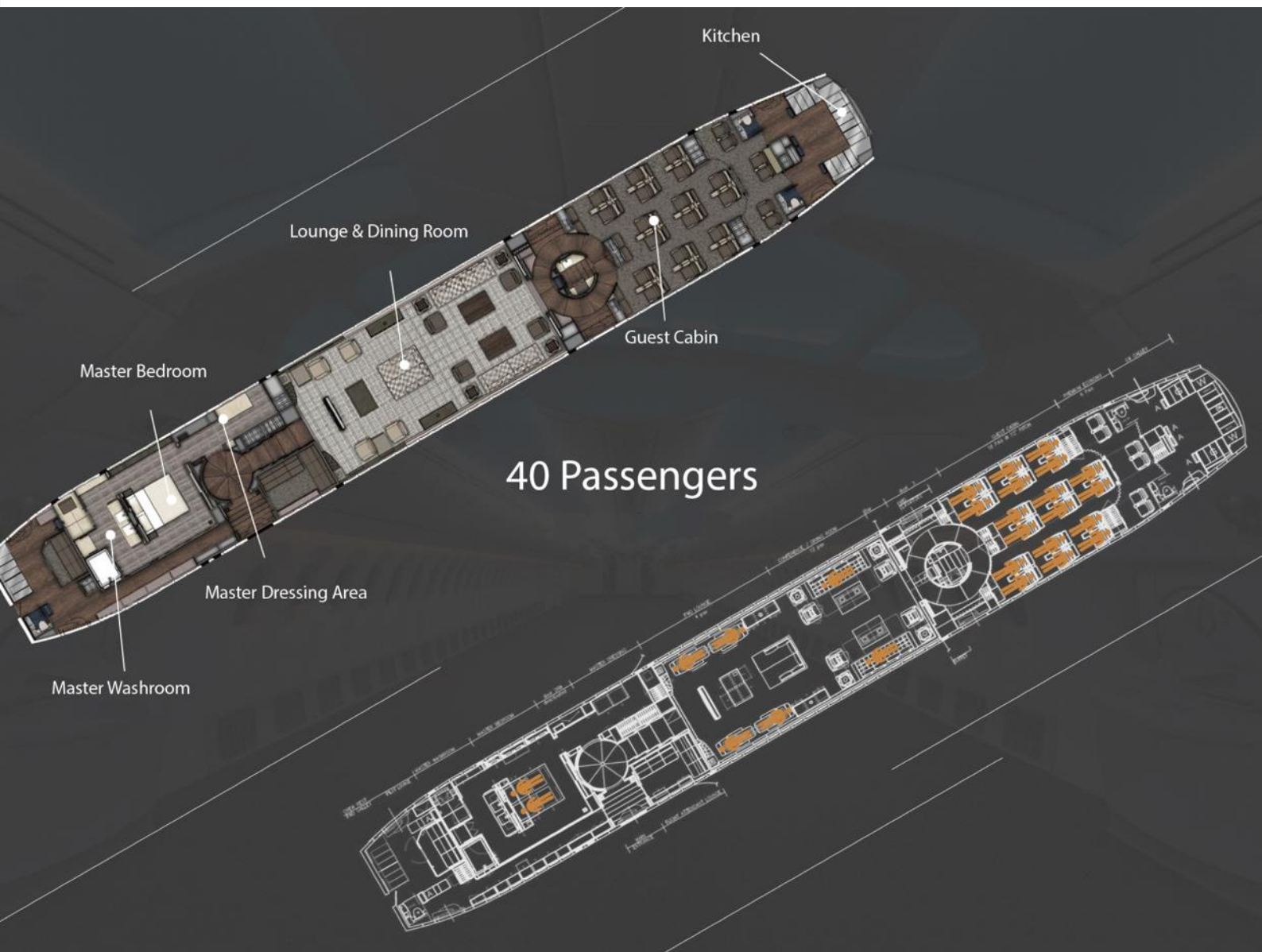
## **787-8 Dreamliner S/N 35309**

### **ENTERTAINMENT SYSTEM**

- Soundproofing package
- IDAIR cabin management and entertainment system (CMS/IFE) for all areas
  - o Audio-video on-demand (AVOD)
  - o HD monitors
  - o Tactile and touchscreen switch panels
  - o Flight information system (moving map)
  - o Blu-ray player in Lounge and multiple HDMI/audio-video jack panels
- Panasonic Global Communications Suite (GCS)
  - o Ku-band Satcom high speed data system
  - o Cabin Wi-Fi network for passenger connectivity
  - o GSM Personal mobile telephone network
- In-seat power system (ISPS) for 5VDC USB and low-current 115VAC/60Hz power (62 locations)
- (4) 3.5KVA Frequency converters and convenience outlet network for higher current 115VAC/60Hz power (19 locations)

Specifications are subject to verification upon inspection.

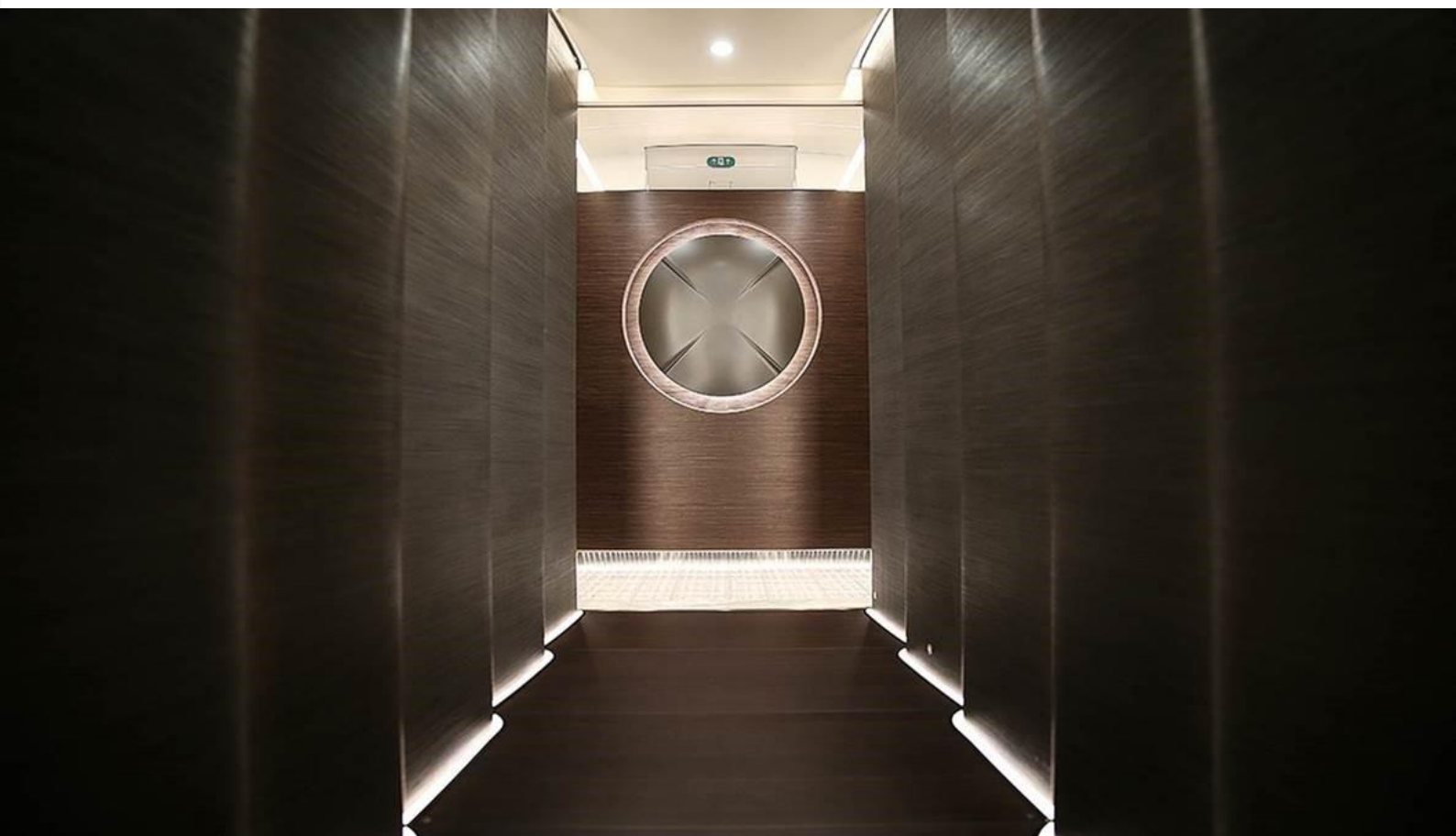
# Boeing BBJ 787-8 Dreamliner S/N 35309



FLOORPLAN

Boeing BBJ

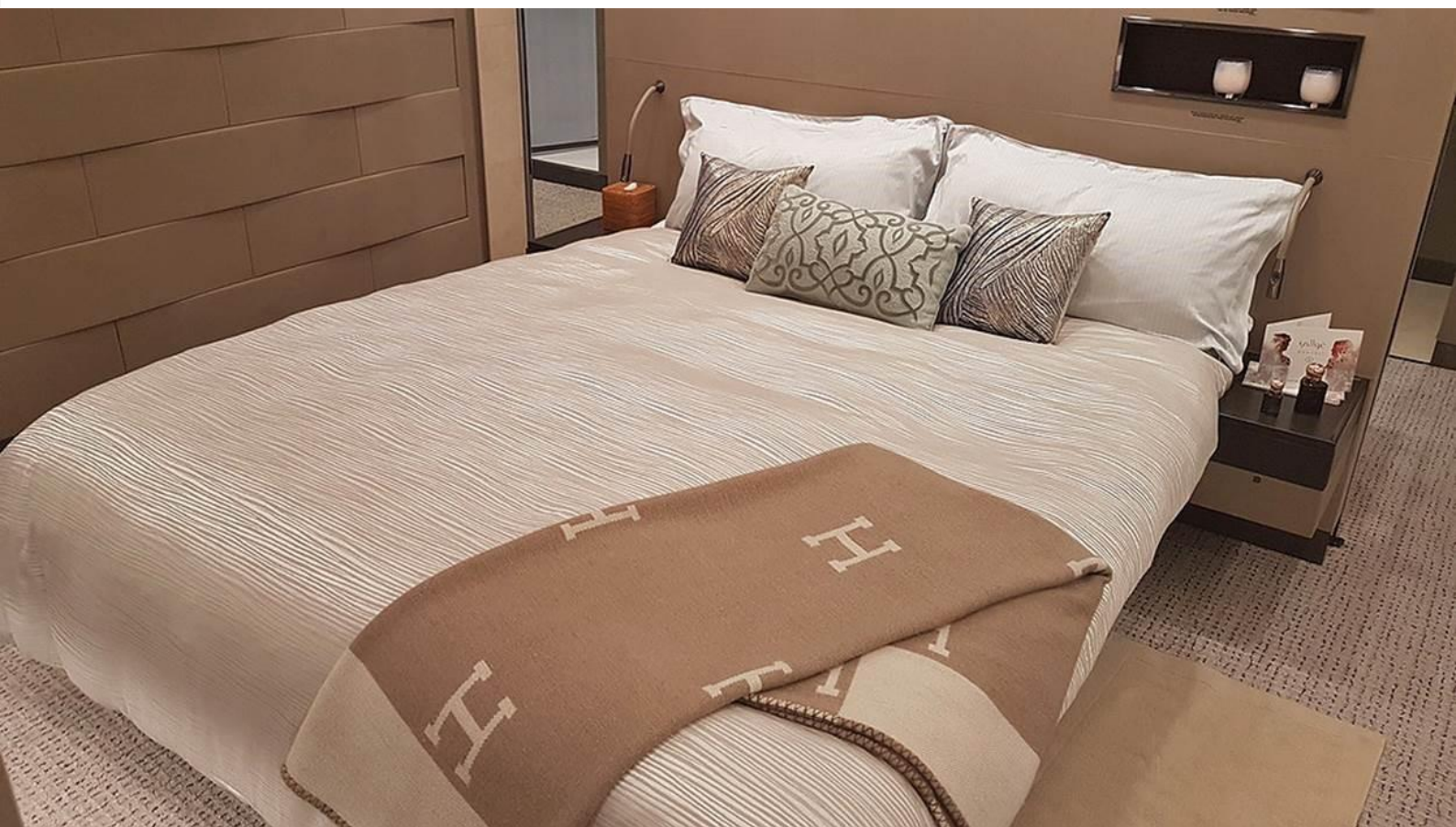
**787-8 Dreamliner S/N 35309**



MAIN HALLWAY

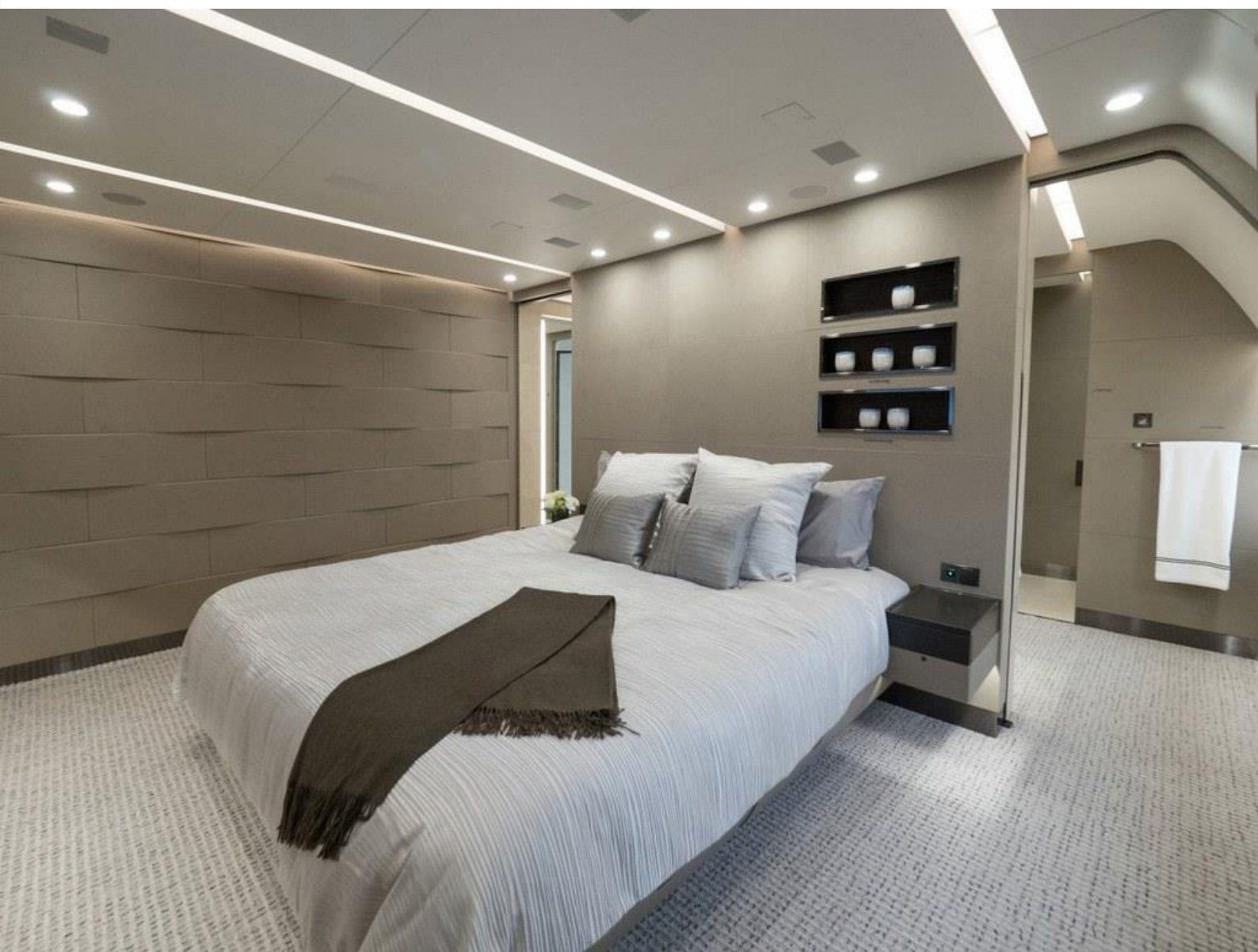


Boeing BBJ  
**787-8 Dreamliner S/N 35309**



MASTER BEDROOM

Boeing BBJ  
**787-8 Dreamliner S/N 35309**



MASTER BEDROOM



Boeing BBJ  
**787-8 Dreamliner S/N 35309**



VIP LAVATORY

Boeing BBJ  
**787-8 Dreamliner S/N 35309**



VIP LAVATORY



Boeing BBJ  
**787-8 Dreamliner S/N 35309**



MAIN LOUNGE  
AFT LOOKING

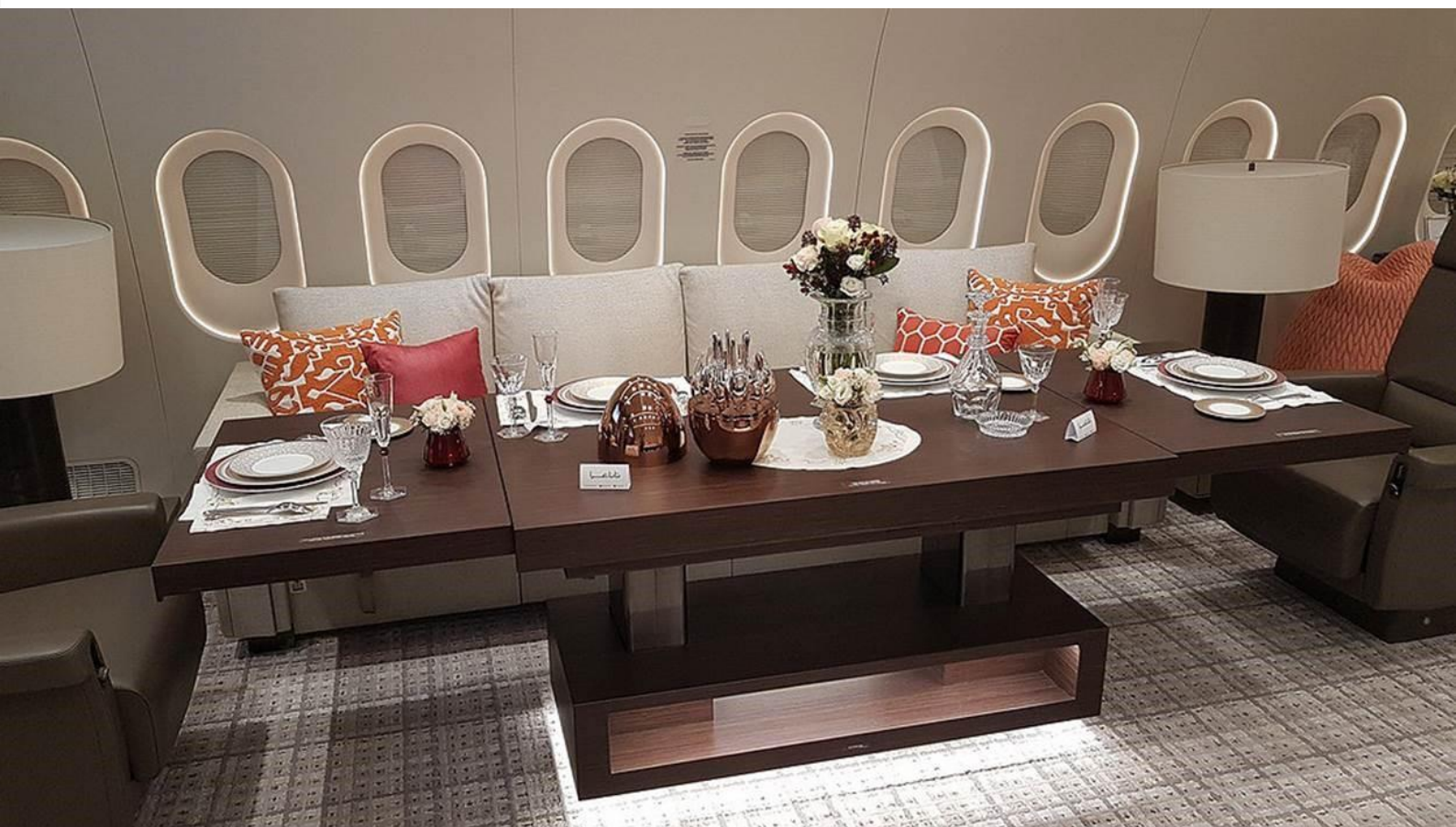
Boeing BBJ  
**787-8 Dreamliner S/N 35309**



MAIN LOUNGE



Boeing BBJ  
**787-8 Dreamliner S/N 35309**



MAIN LOUNGE  
TABLE

Boeing BBJ  
**787-8 Dreamliner S/N 35309**



MAIN LOUNGE  
TABLE



Boeing BBJ  
**787-8 Dreamliner S/N 35309**



MAIN LOUNGE  
DETAILS

Boeing BBJ  
**787-8 Dreamliner S/N 35309**



MAIN LOUNGE  
FWD LOOKING



Boeing BBJ  
**787-8 Dreamliner S/N 35309**



MAIN LOUNGE

Boeing BBJ  
**787-8 Dreamliner S/N 35309**



MAIN LOUNGE  
SEATING DETAILS

Boeing BBJ  
**787-8 Dreamliner S/N 35309**



MAIN LOUNGE



Boeing BBJ  
**787-8 Dreamliner S/N 35309**



GUEST CABIN AFT



Boeing BBJ  
**787-8 Dreamliner S/N 35309**

